

Centerfield's **insure/ANALYSIS** module gives database administrators or performance analysts a powerful and intuitive tool to gain knowledge and understanding of database and SQL activity for their mission-critical applications. Using a simple "drill around" paradigm, the user can easily do advanced data analysis and answer key questions about application behavior, performance bottlenecks, usage patterns, and file access.

Armed with the right information analysts can make informed, effective decisions with minimum effort. In situations where immediate performance problems must be found and resolved, **insure/ANALYSIS** enables the administrator to identify and diagnose problems quickly so action can be taken to correct the situation.

## key benefits

- ❖ **Comprehensive information** - **insure/ANALYSIS** provides data about SQL statements, individual jobs, application users, files, and indices. Both summary and detail information is provided for key performance metrics necessary to isolate and fix problems.
- ❖ **Correlation capability**- **insure/ANALYSIS** allows different facts to be easily correlated. This provides a way to verify conclusions and reinforces the need for and the characteristic changes necessary to improve performance. For example, it becomes a relatively straightforward process to identify the worst performing queries in a workload and tie those SQL statements to recommended indexes. The correlation can also be done from a 'usage tracking' perspective, so IT can generate metrics that drive overall management decisions (like system configuration or the need for user education).
- ❖ **Innovative drill around paradigm** - The intuitive interface gives the user an ability to 'drill around' a particular aspect of a performance problem so it can be identified quickly. Other approaches require a greater investment of time because the user must write or modify queries to find the same information.
- ❖ **Management reporting** - **insure/ANALYSIS** provides reporting capabilities so IT can generate reports for upper management or internal development groups. This gives operations a way to communicate with external groups effectively - with up-to-the minute information.
- ❖ **Extensible** - **insure/ANALYSIS** can also be extended to include additional reports IT would like to see beyond built-in reporting. These reports take advantage of the same intuitive interface and drill around capabilities, providing a consistent environment to perform analysis.

## key features

**insure/ANALYSIS** provides the flexibility and power to analyze your data in numerous ways. You can customize your views with multiple criteria to focus on areas that will give you the greatest benefit. Some analyses that can be accomplished include:

**Job Analysis** identifies which jobs on your system are most active, most efficient, and least efficient. This analysis can be done for a single job or set of jobs so you can optimize the access of the database for performance or usability.

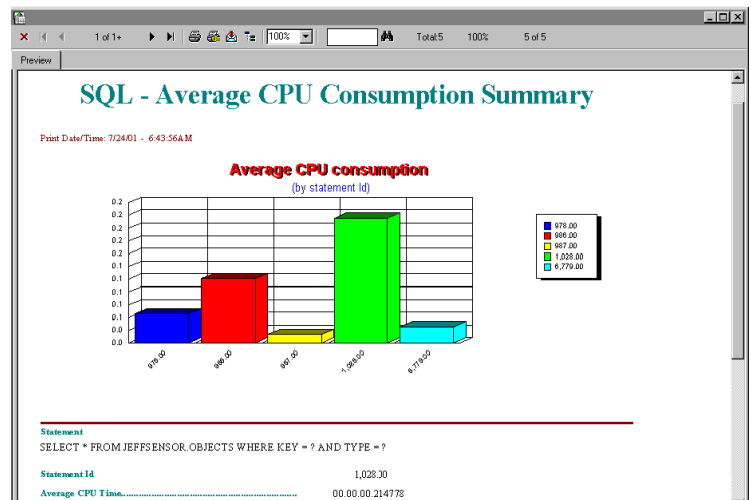
**Program Analysis** assists application developers and implementers identifying the impact different programs have on the system. This allows you to improve the application to better utilize the database or improve the database to better support the application.

**User Analysis** identifies, tracks, and manages user activity on your AS/400 data so you can improve the quality of service to your users.

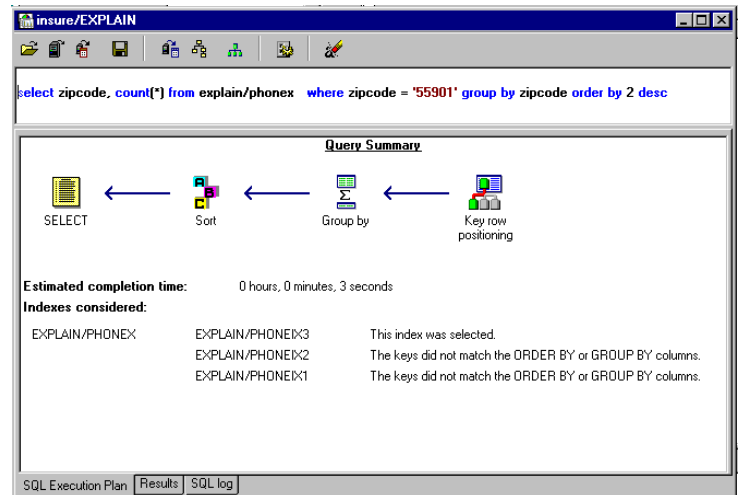
**File Analysis** identifies what files are being accessed, how they are being accessed, and by which users and programs. This information can help maximize performance and tailor your database for the way it is being used.

**SQL Analysis** determines what affect SQL statements are having on your AS/400 by giving details on implementation, reuse, prepare, parameter and full-open analysis. With all this information at your fingertips, application developers and administrators can truly control how SQL performs on the AS/400.

This module has been tightly integrated with our **insure/EXPLAIN** feature so you can select your statements directly from reports and graphically see how the AS/400 optimizer implements them. The explain feature surfaces the various tuning options on the AS/400 and our built-in performance tuning options, such as index creation and context-sensitive performance help text, making it easy to adjust the SQL implementation



**Focus on the 20% that gives you the 80% benefit**



**Graphically analyze individual SQL statements**

