

Finally, IT administration staff has a tool to monitor and support users accessing the IBM System i from network-based applications. With Centerfield's insure/MONITOR module, an administrator can identify potential problems earlier and take action to protect critical applications – a very difficult task for all network-based applications.

With insure/MONITOR, end-users with access to ad hoc query tools, Client Access functions, or FTP can now be supported with ease. insure/MONITOR allows problem jobs to be quickly identified, the functions those jobs are executing isolated, and corrective action taken. In cases where an end-user calls the help desk, insure/MONITOR can quickly identify the user's connection and the series of events that led to their problem.

Key Benefits

Comprehensive - insure/MONITOR streamlines IT's ability to support and diagnose functional and performance issues by providing a comprehensive set of system statistics viewable from one screen. Besides traditional information available via green-screen, users can easily see who is assigned to which job, what that user's last request was (e.g. the last SQL statement submitted by a query tool), and statistics about network communication flows. Much of this information is not available through any system command or other products.

Personalization – administrators have the capability to solve complex problems by having the right set of tools. When problems arise, administrators have one-click access to job information, can log SQL or FTP requests to the joblog, and see debug messages. Policies can be set up to trace information by user, by time of day or connection type so you get a complete picture of user activity.

Advanced diagnostic functions – administrators have the capability to implement a complete process to quickly handle and resolve user issues by having the right set of tools. When issues arise, administrators have one-click access to a searchable joblog or can set up policies to log additional information in the joblog, such as connection info, interfaces used and debug messages. These policies can be set up to trace information by user, by time of day or connection type so you get a complete picture of user activity.

Multi-mode operation: While insure/MONITOR is designed for managing network-based applications, it can also be used for general system activity. With a click of the mouse, users see all system jobs and perform the same level of monitoring and control as they have with networked jobs.

J.D. Edwards OneWorld Customization – this module has been customized for OneWorld to enable shops with this application to better manage users and diagnose problems. The product comes with a built-in data view customized for OneWorld. Included in this view is information about the job but more importantly information about the actual **OneWorld user and group profile.**

Key Features

insure/MONITOR gives you the insight necessary to monitor and diagnose user issues as they happen on the AS/400 so quick actions can be taken to fix problems before they impact your system.

MONITOR:

insure/MONITOR not only displays all jobs but it can also be set up to display only client/server jobs or J.D. Edwards OneWorld jobs.

insure/MONITOR gives IT access to over 75 system statistics and lets users customize the views so only relevant information is monitored and tracked. insure/MONITOR delivers built in views to monitor ODBC, Performance, TCP/IP, Security, and JDE OneWorld activities. Each view can be easily graphed for summary viewing of vital statistics.

DIAGNOSTICS:

Users can the diagnostics complex problems with insure/MONITOR with one click access to:

Job Information

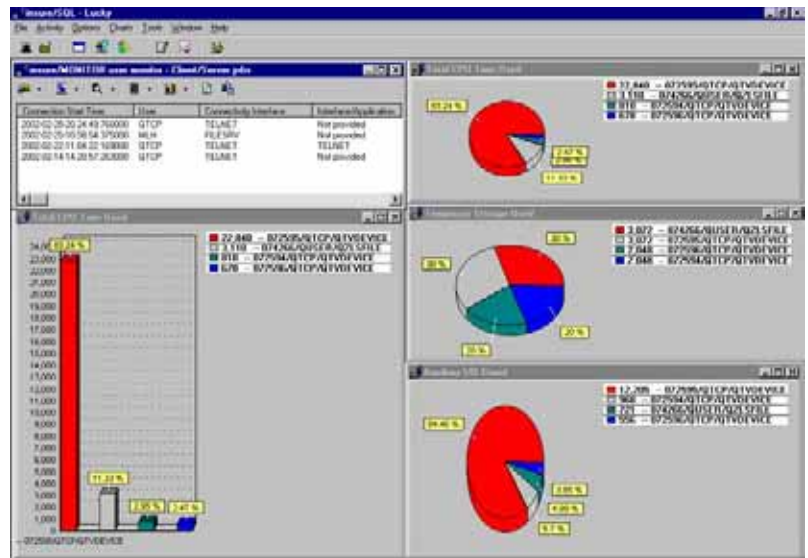
- A *searchable* joblog.
- All information available from DSPJOB but in a sorted and graphical format.
- Fully customizable dashboard for specific users or job responsibilities.
- Requests from client/server applications such as ODBC and FTP with information not available anywhere else.

Advanced Diagnostics

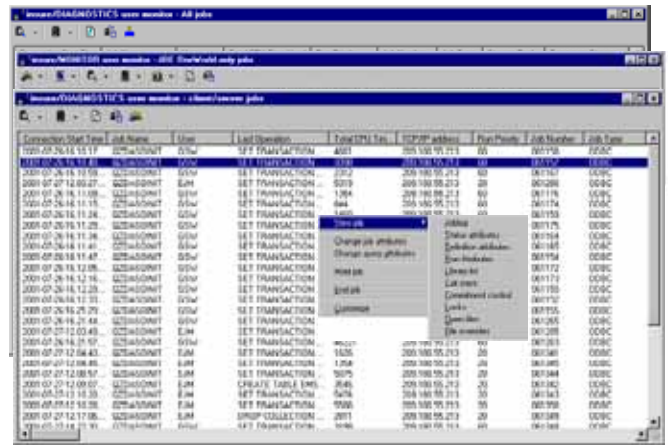
- Mutex waits
- Semaphore waits
- Object and record locks
- Long running database transactions

Set-and-Forget Policy Definitions

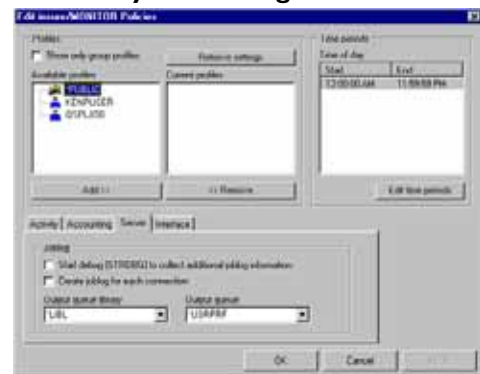
- Log connection information
- Record interface activity in joblog or in a database file for historical reporting
- Start debug to collect additional information for joblog information
- Create joblog for each connection



Multiple views with single click access to controls



Policy driven diagnostics



insure/MONITOR is part of *HomeRun* All you'll ever need to tune SQL for DB2 on IBM System i